

# SHV

## ► DESCRIPTIONS

SHV connectors provide secure handling. Because center contacts are well recessed to prevent shock hazards in unmated condition. All inner contacts are fully captivated and will withstand axial forces of 100N minimum.

When mating a connector pair the outer conductor contact is made prior to the inner conductor contacts.

SHV connectors are suitable for all high voltage applications up to 5kV DC or 3.5kVrms.

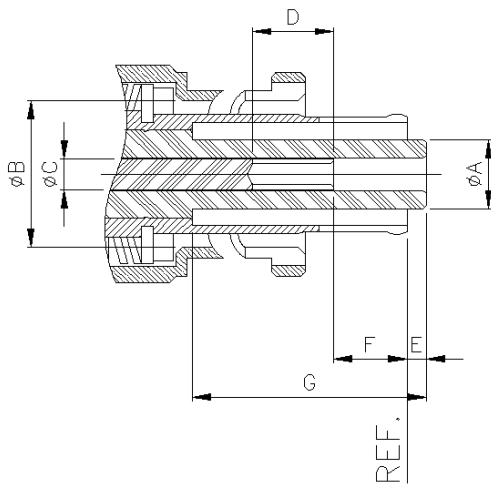
These connectors are typically used in nuclear instruments or test and measurement equipment. Voltages are valid for both, the mated and the unmated condition.

INTERFACE PER MIL-C-39012/106 AND MIL-C-39012/107

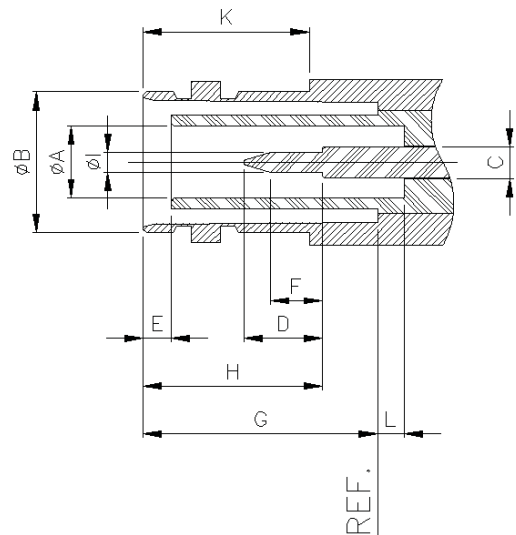


## ▶ INTERFACE DIMENSIONS

### PLUG



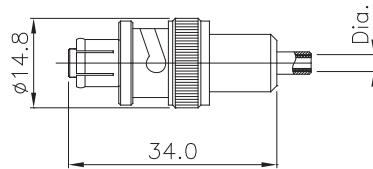
### JACK



Rep.	PLUG				JACK			
	mm		inch		mm		inch	
	min.	max.	min.	max.	min.	max.	min.	max.
A	4.57	4.72	0.180	0.186	4.83	4.98	0.190	0.196
B	9.78	9.91	0.385	0.390	9.60	9.70	0.378	0.382
C	2.06		0.081		2.06		0.081	
D	5.44		0.214		5.26	5.44	0.207	0.214
E	1.17	1.63	0.046	0.064	1.55	1.98	0.610	0.780
F	4.42		0.174		3.30		0.130	
G	15.90	16.10	0.626	0.634	15.90	16.00	3626.000	0.630
H					11.59	12.70	0.456	0.500
I					1.32	1.37	0.052	0.054
K					10.85		0.427	
L					1.63	2.18	0.064	0.086

## ▶ TECHNICAL DATA

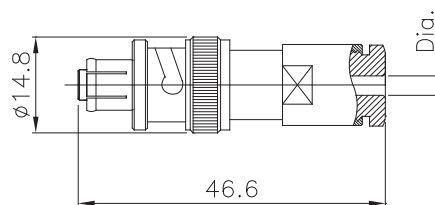
REQUIREMENT		SPECIFICATIONS
<b>ELECTRICAL CHARACTERISTICS</b>		
Impedance		50ohm
Frequency range		DC~300MHz
Voltage rating		3500Vrms AND 5000Vdc MAX.
Contact resistance(MAX.)	Initial	After
	Center contact	2.5mΩ
	Outer contact	N/A
	Braid to body	N/A
Dielectric withstanding voltage		5000Vrms AND 10000Vdc
<b>MECHANICAL CHARACTERISTICS</b>		
Force to engage and disengage	Longitudinal force	3LB MAX.
	Torque	2.5IN-LB MAX.
Center contact retension		6LB MIN.
Hermetic seal		NOT APPLICABLE
Durability(life time)		500 MATINGS
Coupling retension force		100LBS MIN.
Cable retension force	Noncrimp type	40LBS MIN.
	0.155-0.189 OD.	50LBS MIN.
	0.190-0.229 OD.	60LBS MIN.
	0.230-0.249 OD.	75LBS MIN.
	0.250- AND LARGER	90LBS MIN.
<b>ENVIRONMENTAL CHARACTERISTICS</b>		
TEMPERATURE RANGE		-65°C ~ +165°C
VIBRATION	MIL-STD-202, METHOD204, CONDITION A.	
SHOCK	MIL-STD-202, METHOD213, CONDITION I.	
THERMAL SHOCK	MIL-STD-202, METHOD107, CONDITION B.	
HUMIDITY	MIL-STD-202, METHOD103, CONDITION B	



## Straight Plugs

### ■ Crimp Type

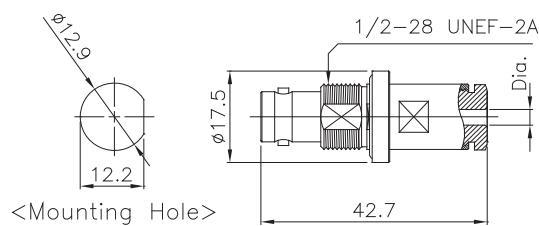
PART NO.	Dia.	CABLE
S150-001	Ø1.55 (Ø1.7)	RG 316(RG174)
S150-002	Ø3.1	RG 58
S150-003	Ø7.6	RG 213



## Straight Plugs

### ■ Clamp Type

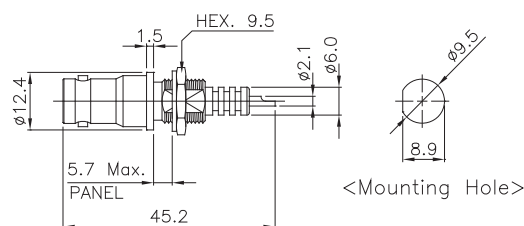
PART NO.	Dia.	CABLE
S150-004	Ø3.0	RG 316
S150-005	Ø6.5	RG 58
S150-006	Ø11.0	RG 213



## Straight Bulkhead Jacks

### ■ Clamp Type

PART NO.	Dia.	CABLE
S150-007	Ø3.0	RG 316
S150-008	Ø6.5	RG 58
S150-009	Ø11.0	RG 213



## Front Mount Bulkhead Jack

### ■ Solder Cup Terminal

PART NO.	IMPED
S150-010	50 Ω

