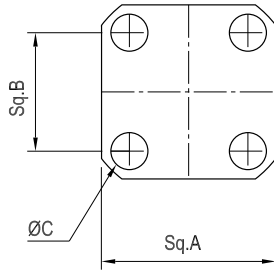


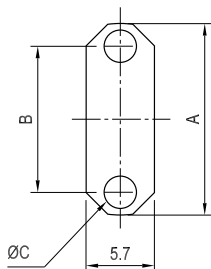
# Mounting figures

## Connector Flanges

(Panel mounted connectors)



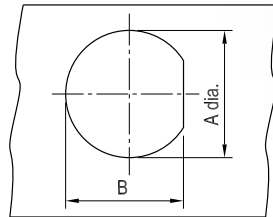
4-hole flanges			
No.	A	B	C
01	12.70	8.64	2.60
02	17.46	12.70	M2.5 M3.0 #3-56tap 2.70~3.50
	17.46	12.70	
	17.46	12.70	
	17.46	12.70	
	17.46	12.70	
03	25.40	18.25	#6-32tap #4-40tap 3.20~4.30
	25.40	18.25	
	25.40	18.25	
	25.40	18.25	
	25.40	18.25	
	25.40	19.00	
04	32.0	36.50	6.53



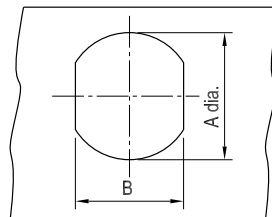
2-hole flanges			
No.	A	B	C
01	16	12.2	2.60
02	16	12.2	2.60
03	33	25.7	3.20

## Panel Cutouts

(Bulkhead mounted connectors)



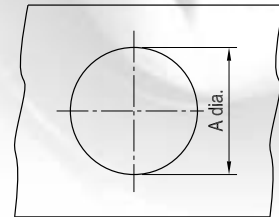
D-Hole		
No.	A	B
04	19.18	18.36
05	16.00	15.19
06	16.00	14.81
07	14.15	13.49
08	12.83	12.01
09	11.23	10.41
10	10.34	9.19
11	9.65	8.84
12	8.10	7.42
13	6.48	5.99
14	4.95	4.47



Double D-Hole		
No.	A	B
14	19.18	17.58
15	16.00	13.61
16	9.65	8.66
17	8.10	7.06

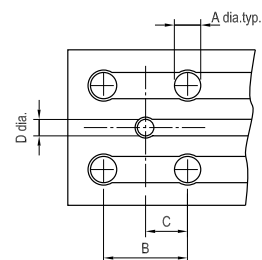
## Panel Cutouts

(Bulkhead mounted connectors)



Round Hole	
No.	A
01	6.18
02	9.65
03	16.0

## P. C. Board Drilling



(PCB traces are shown for illustrative purpose only, and not representative of actual circuitry)

## Coaxial connectors

No.	A	B	C	D
PCB01	1.70	10.1	5.08	1.14
PCB02	1.14	12.7	6.35	1.14
PCB03	1.70	7.62	3.81	0.89
PCB04	1.70	5.08	2.54	1.40
PCB05	1.70	5.08	2.54	1.14