

► DESCRIPTIONS

The standard connector BNC is the most used coaxial connection.

The little coaxial contact with its bayonet locking system is used in its standard version up to 4GHz.

All 50 ohm connectors are intermateable with 75 ohm ones.

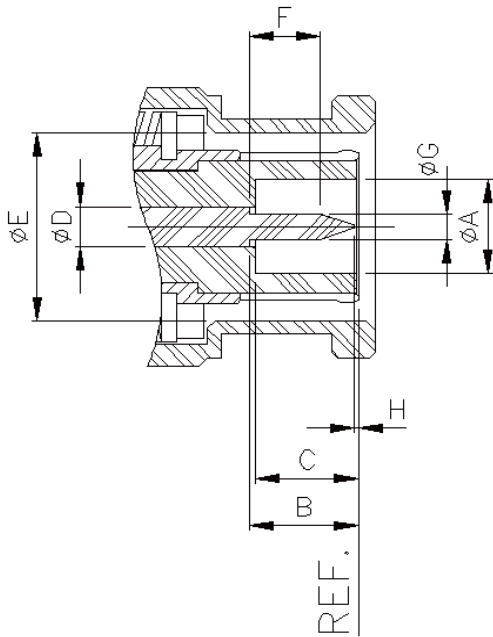
► GENERAL

- MIL-C-39012
- MIL-A-55339

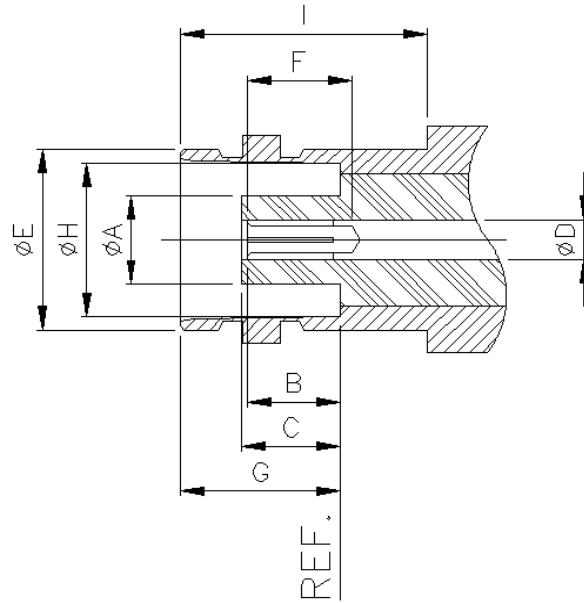


► BNC(50ohm) INTERFACE DIMENSIONS

PLUG

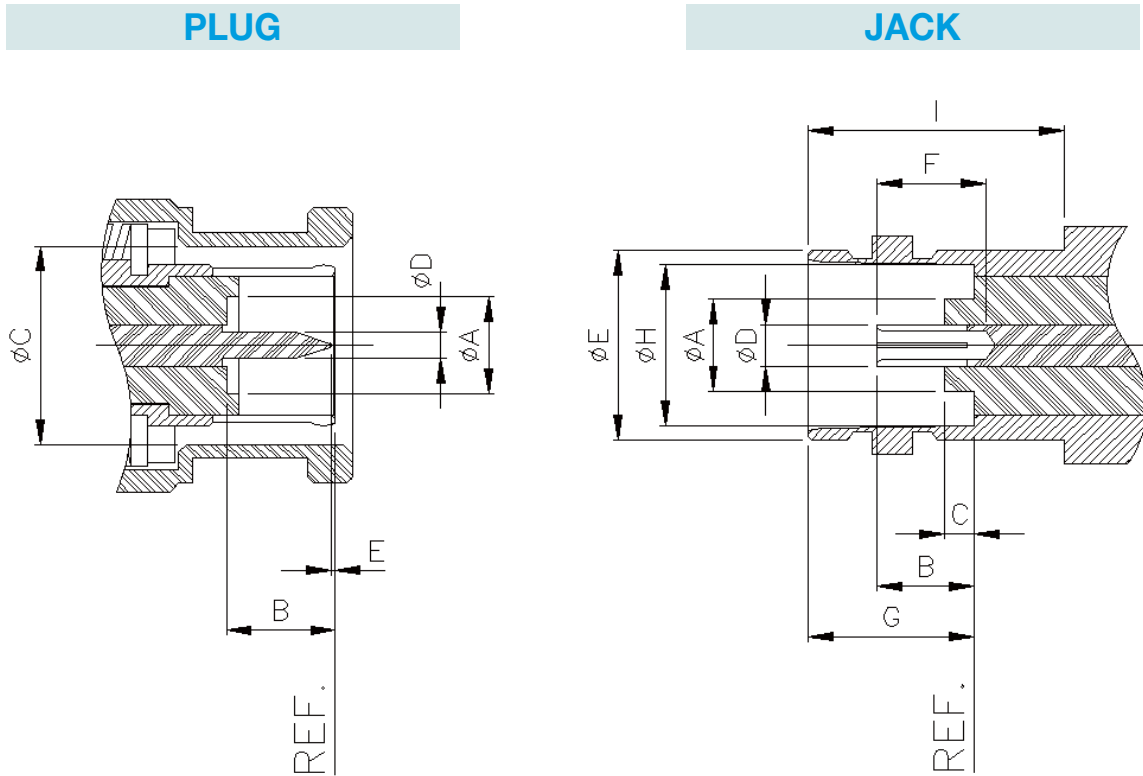


JACK



Rep.	PLUG				JACK			
	mm		inch		mm		inch	
	min.	max.	min.	max.	min.	max.	min.	max.
A	4.83		0.190		4.72		0.186	
B	5.33	5.84	0.210	0.230	4.72	5.23	0.186	0.206
C	5.28	5.79	0.208	0.228	4.78	5.28	0.188	0.208
D	2.06	2.21	0.081	0.087	2.06	2.21	0.081	0.087
E	9.78	9.91	0.385	0.390	9.60	9.70	0.378	0.382
F	1.98		0.078		4.95		0.195	
G	1.32	1.37	0.052	0.054	8.31	8.51	0.327	0.335
H	0.08		0.003		8.10	8.15	0.319	0.321
I					10.52		0.414	

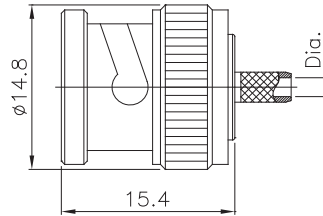
► BNC(70ohm) INTERFACE DIMENSIONS



Rep.	PLUG				JACK			
	mm		inch		mm		inch	
	min.	max.	min.	max.	min.	max.	min.	max.
A	4.83		0.190			4.72		0.186
B	5.28	5.79	0.208	0.228	4.72	5.23	0.186	0.206
C	9.78	9.91	0.385	0.390	1.50 nom.		.059 nom.	
D	1.32	1.37	0.052	0.054	2.10 nom.		.827 nom.	
E	0.08	1.02	0.003	0.040	9.60	9.70	0.378	0.382
F					4.95		0.195	
G					8.35	8.48	0.329	0.334
H					8.10	8.15	0.319	0.321
I					10.60		0.417	

► TECHNICAL DATA

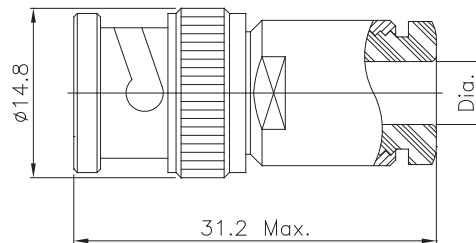
REQUIREMENT	MIL-C-39012	SPECIFICATIONS
Electrical Characteristics		
Impedance		50 ohm 75 ohm
Frequency range		4 GHz 1 GHz
V.S.W.R	3-14	Straight 1.30 max. Right angle 1.35 max.
Dielectric withstanding voltage	3-17	1500V/50Hz
Insertion Loss	3-27	Straight 0.2 dB max. Right angle 0.3 dB max.
RF leakage	3-26	-55 dBm min. between 2 and 3GHz
Insulation resistance	3-11	5,000 Mohm min.
Contact resistance	3-16	Initial After Center contact 1.5 mohm 2.0 mohm Outer contact 0.2 mohm -
Max. Contact current (DC)		3.5 A
Working voltage		500V/50Hz
Mechanical Characteristics		
Engagement force and separation force		axial 14 N max. Coupling 30 N max.
Coupling nut retention force	3-25	44.5 daN
Life time	3-15	500 matings
Cable retention force	3-24	Flexible cable 5 mm 227 N Flexible cable 6 mm 340 N
Coupling proof torque		Not applicable
Environmental Characteristics		
Shock	3-19	MIL-STD-202(213)
Vibration	3-18	MIL-STD-202(204)
Moisture	3-21	MIL-STD-202(106)
Corrosion (salt spray)	3-13	MIL-STD-202(101)
Thermal shock		MIL-STD-202(107)
Temperature cycling	3-20	MIL-STD-202(102)
High temperature test		MIL-STD-202(108)
Operating temperature range		-65°C + 165°C
Materials		
Bodies		Brass or Stainless steel
Contacts(Female)		Beryllium copper
Contacts(Male)		Brass
Insulators		PTFE (Teflon)
Gaskets		Silicone rubber
Plating		
Bodies		Nickel Plated
Center contacts		Gold Plated



Straight Plugs

■ Crimp Type

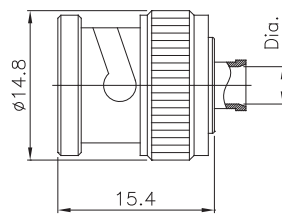
PART NO.	Dia.	CABLE
S550-001	Ø1.0	RG 178
S325-001	Ø1.55 (Ø1.7)	RG 316, 179
S325-002	Ø3.1	RG 400, 58



Straight Plugs

■ Clamp Type

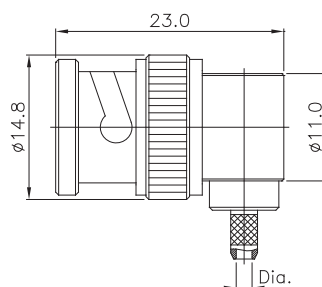
PART NO.	Dia.	CABLE
S550-004	Ø3.0	RG 316
S550-005	Ø5.5	RG 400, 58



Straight Plugs

■ Direct solder type

PART NO.	Dia.	CABLE
S550-006	Ø2.3	UT 085
S550-007	Ø3.7	UT 141

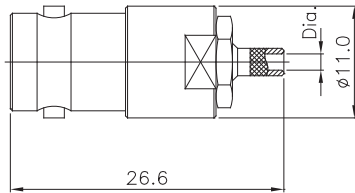


Right Angle Plugs

■ Crimp Type

PART NO.	Dia.	CABLE
S325-110	Ø1.55 (Ø1.7)	RG 316(RG174)
S550-010	Ø3.1	RG 400, 58

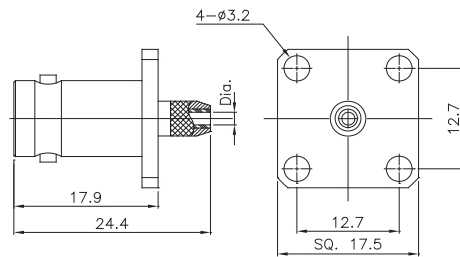
BNC



Straight Jacks

■ Crimp Type

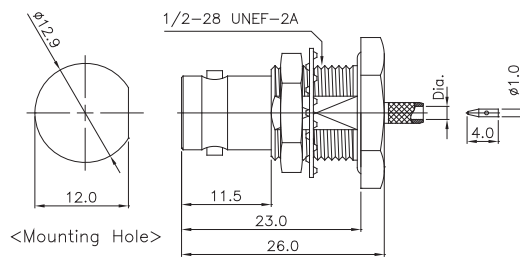
PART NO.	Dia.	CABLE
S550-014	$\phi 1.55$ ($\phi 1.7$)	RG 316(RG174)
S550-015	$\phi 3.1$	RG 400, 58



Straight 4 Hole Flange Jack

■ Crimp Type

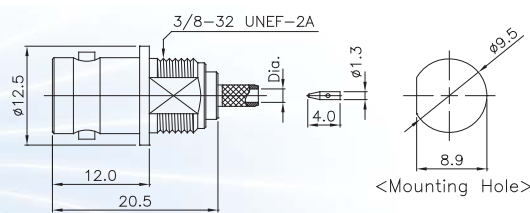
PART NO.	Dia.	CABLE
S750-216-B	$\phi 1.7$	RG 179
S550-018	$\phi 3.1$	RG 400, 58



Straight Bulkhead Jacks

■ Crimp Type ■ Panel Mount

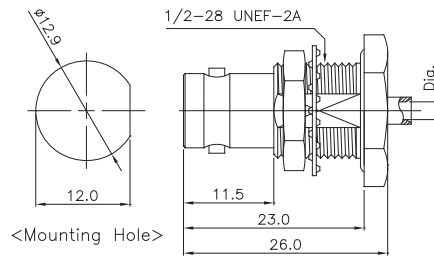
PART NO.	Dia.	CABLE
S550-2035	$\phi 1.7$	RG 316
S550-2036	$\phi 3.1$	RG 400, 58



Straight Front Mount Bulkhead Jacks

■ Crimp Type

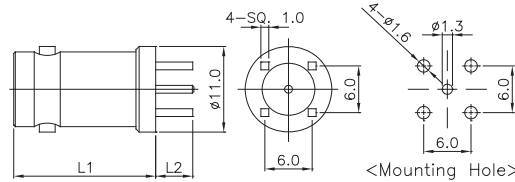
PART NO.	Dia.	CABLE
S550-2005	$\phi 1.55$	RG 316
S750-2005	$\phi 1.7$	RG 179



Straight Bulkhead Jacks

■ Direct Solder Type

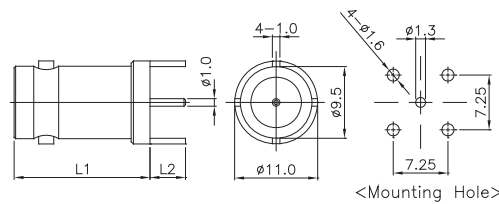
PART NO.	Dia.	CABLE
S550-2035-1	$\phi 2.3$	UT 085
S550-2036-1	$\phi 3.7$	UT 141



Straight Jack for PCB

■ PCB mount type

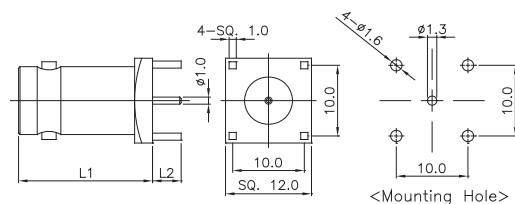
PART NO.	L1	L2	IMPED
S550-101	13.6	4.6	50 Ω
S750-101			75 Ω
S550-102	18.0	4.6	50 Ω
S750-102			75 Ω



Straight Jack for PCB

■ PCB mount type

PART NO.	L1	L2	IMPED
S550-103	13.6	4.6	50 Ω
S750-103			75 Ω
S550-104	22.7	4.6	50 Ω
S750-104			75 Ω
S550-105	33	4.6	50 Ω
S750-105			75 Ω

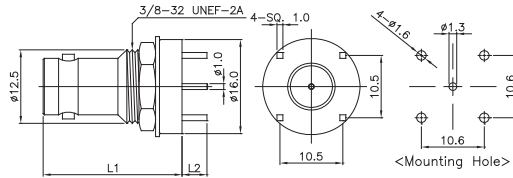


Straight Jack for PCB

■ PCB mount type

PART NO.	L1	L2	IMPED
S550-106	13.1	4.0	50 Ω
S750-106			75 Ω
S550-107	18.7	4.0	50 Ω
S750-107			75 Ω

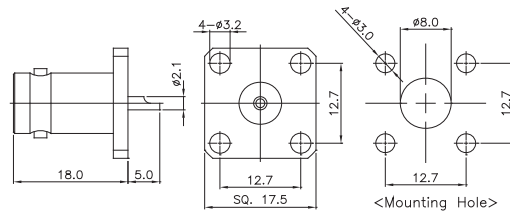
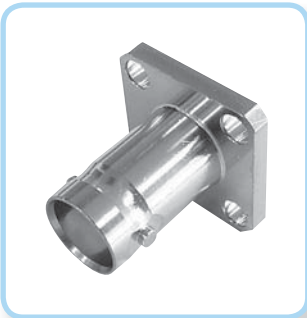
BNC



Straight Bulkhead Jack for PCB

- PCB mount type

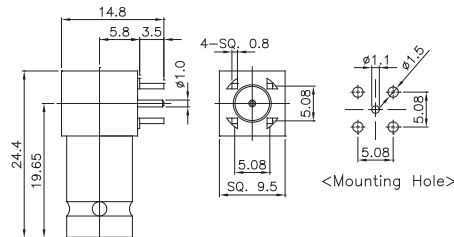
PART NO.	IMPED
S550-108	50 Ω
S750-108	75 Ω



Straight 4H Flange Jack

- Solder Cup Terminal

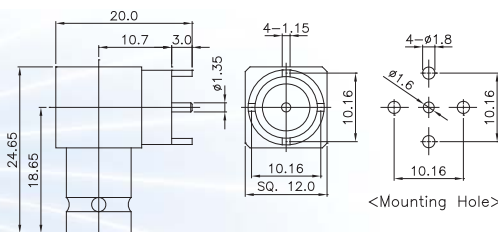
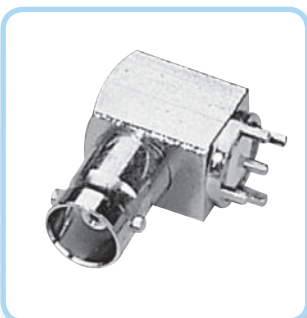
PART NO.	IMPED
S550-2016	50 Ω
S750-2016	75 Ω



Right Angle Jack for PCB

- PCB mount type

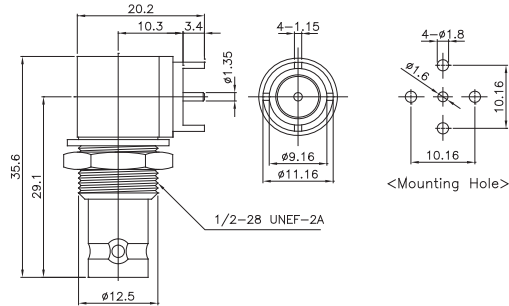
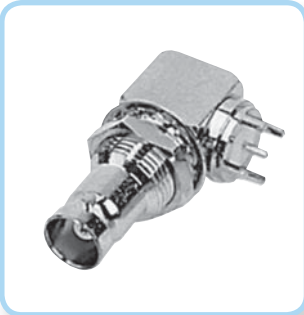
PART NO.	IMPED
S550-110	50 Ω
S750-110	75 Ω



Right Angle Jack for PCB

- PCB mount type

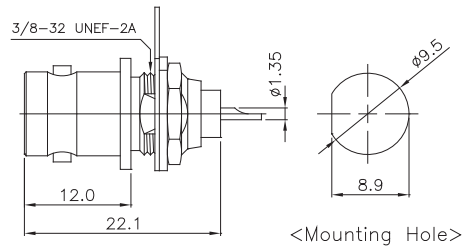
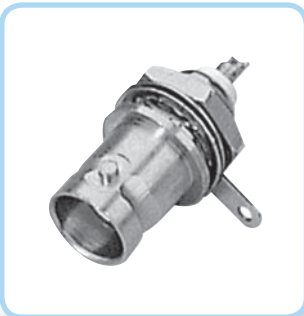
PART NO.	IMPED
S327-672	50 Ω
S750-672	75 Ω



Right Angle Bulkhead Jack for PCB

- PCB mount type

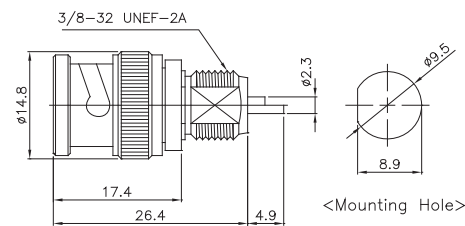
PART NO.	IMPED
S325-673	50 Ω
S750-673	75 Ω



Straight Front Mount Bulkhead Jack

- Solder Cup Terminal

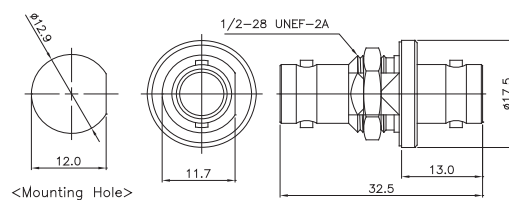
PART NO.	IMPED
S550-2003	50 Ω
S750-2003	75 Ω



Straight Front Mount Bulkhead Plug

- Solder Cup Terminal

PART NO.	IMPED
S327-201	50 Ω
S750-201	75 Ω

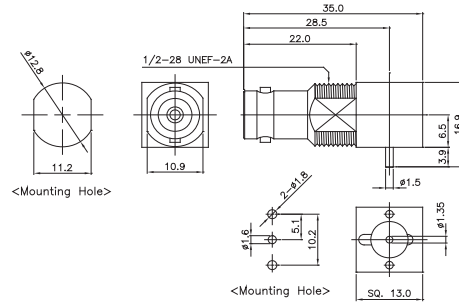


Bulkhead jack to jack Adaptor

- Panel mount

PART NO.	IMPED
S550-202	50 Ω
S750-202	75 Ω

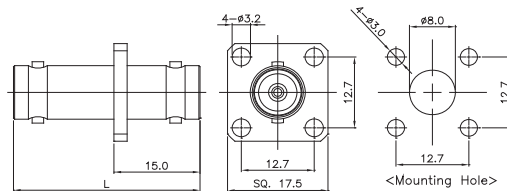
BNC



Right Angle Bulkhead Jack for PCB

■ PCB mount type

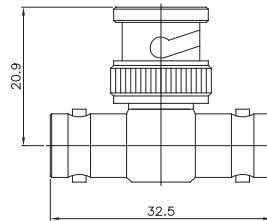
PART NO.	IMPED
S550-183	50 Ω
S750-183	75 Ω



Jack to Jack 4H Flange Adaptor

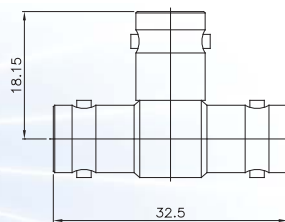
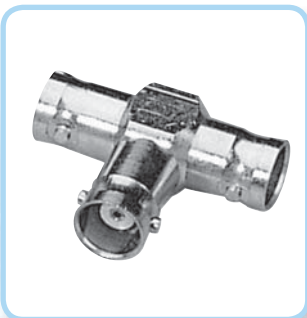
■ Panel mount type

PART NO.	L	IMPED
S550-2001	32.5	50 Ω
S750-2001		75 Ω
S550-207	43.5	50 Ω
S750-207		75 Ω



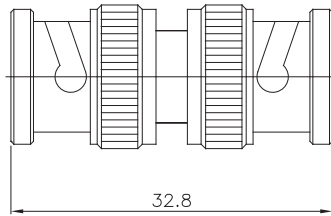
Tee Adaptor, Jack to Plug to Jack

PART NO.	IMPED
S550-208	50 Ω
S750-208	75 Ω



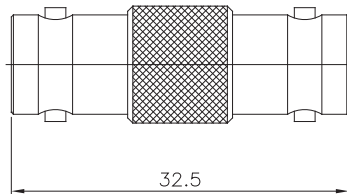
Tee Adaptor, Jack to Jack to Jack

PART NO.	IMPED
S550-210	50 Ω
S750-210	75 Ω



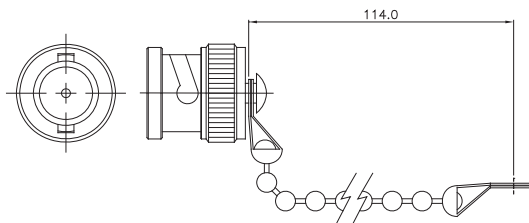
Plug to Plug Adaptor

PART NO.	IMPED
S550-204	50 Ω
S750-204	75 Ω



Jack to Jack Adaptor

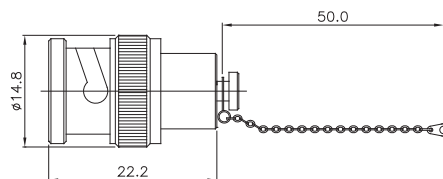
PART NO.	IMPED
S550-205	50 Ω
S750-205	75 Ω



BNC male short / BNC dust cap

- Chain type

PART NO.	IMPED
S550-2005	SHORT
S550-200	DUST CAP



Plug Termination

- Chain type

PART NO.	IMPED
S550-180	50 Ω
S750-180	75 Ω